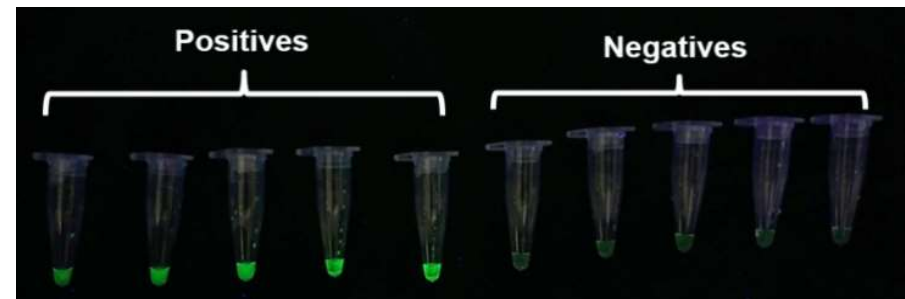


## RT-LAMP PCR (Diagnostics)

- **Rs. 100 – Rs. 200 per test**
- **Low set-up cost**
- **Minimal instrumentation required**
- **Assay can be done by non-technical staff with minimal training**
- **Awaiting ICMR approval**

- RT-LAMP based molecular diagnosis relies on conversion of RNA to cDNA and then an isothermal amplification of specific viral regions through specially designed primers.
- Sample is collected as a nasopharyngeal swab in the viral transport medium.
- RNA extracted from sample and used for RT-LAMP. Addition of SYBR Green I dye to the reaction mixture results in green fluorescence on accumulation of amplified DNA in a positive sample.
- Simple visual detection ascertains if the sample is COVID-19 positive or negative.
- No requirement of expensive instrumentation and expertise. The sensitivity and accuracy of the test almost matches the current gold standard qPCR test
- Can be setup on the back of a van or in a booth at bus stand, airport, railway station, or rural area level facilities in interior region.



### Colour reaction confirming presence of Viral RNA

CSIR-Indian Institute of Integrative Medicine (CSIR-IIIM)  
Jammu, India

**#CSIRFightsCOVID19**